

# Vaillant Heating Settings

This guide will show you how to get the best from your Vaillant heating system.



## Contents

Heating - introduction	P 2
Changing the day-time temperature	P 3
Changing the night-time temperature	P 4 – P 6
Changing timings	P 6 – P 9
Changing the date and time	P 10 – P11
Further help and advice	P 12

# Heating

We have set your home to warm up at 6.30am (7.30am at weekends), stay warm all day and reduce temperature a few degrees at night from 10.30pm (11pm weekends)  
If you are happy with these timings, then you don't need to do anything. If you want to change these timings, the guide shows you how to do this.

The Vaillant control panel for your heating system is fixed to the wall in your hall



## Your start menu

On the screen you will see:

- current mode (auto – day or night)
- the date and time
- current temperature of your home

# To change the day-time temperature

## For a permanent change

Turn the dial to the temperature you want  
(The screen changes and the temperature is shown highlighted in black)



Then press the button under the 'OK'



## For one day

Turn the dial to the temperature you want and then wait for around 10 seconds

The screen will return to the start menu



# To change the night-time temperature

Press the left hand button under the word 'Menu'



The word 'information' is highlighted.



Turn the dial until 'Desired Temperature' is highlighted.



Press the button under 'Select'



The screen will highlight 'Heating1'.

Press the button under 'Select'



Turn the dial until the temperature next to 'Night set back' is highlighted.



Press the button under 'Change'



Turn the dial to change the night time temperature you want



Press the button under 'Ok'



Press the button under 'Back' twice to return to the start menu



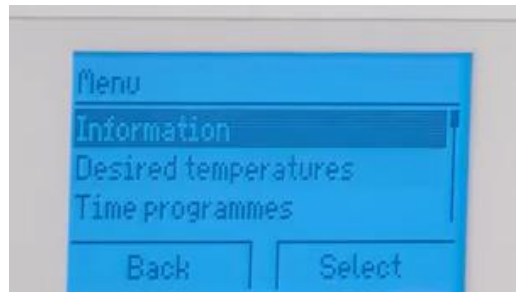
You can also permanently change the day temperature in the same way

## Changing Timings

If you want to change the time that your home cools at night or heats up in the morning, press the button under 'Menu'



The word 'Information' will be highlighted, so turn the dial until 'Time Programmes' is highlighted



Press the button under 'Select'



On the next screen press the button under 'Select' when 'Heating1' is highlighted



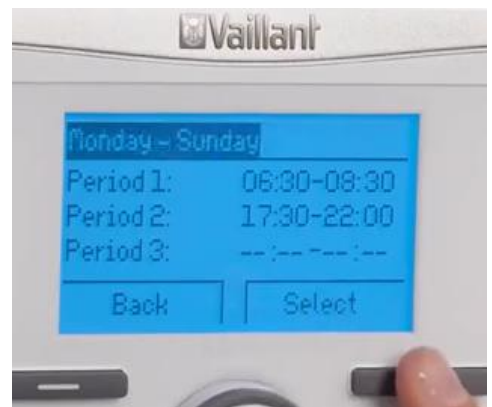
This screen appears with 'Monday' highlighted



If you want the timing the same every day, turn the dial until 'Mon-Sun' appears highlighted at the top.

If you want different times during the week then turn the dial until the days you want are highlighted

Then press the button under 'Select'





Period 1 time is highlighted. This is the time you would like your heating to warm up to the 'day' temperature.



Turn the dial to the time you want and then press the button under 'OK'



The time now highlighted is the time you would like you home to drop to your night time temperature.



Turn the dial to the time you want and then press the button under 'Ok'

You don't need to add any other periods unless you want the temperature to change during the day as well



Press the button under 'Back' a few times to return to the start menu

## Changing the time and date

Press the button under 'Menu'

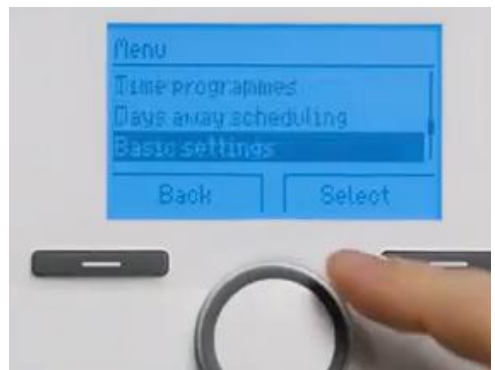


It will bring up this screen.



This screen will appear with 'Information' highlighted.

Turn the dial until 'Basic Settings' is highlighted



Press the button under 'Select'



The following screen will appear with 'Language' highlighted.  
Turn the dial until 'Date/Time' is highlighted.



Press the button under 'Select'



Press the button under 'Change'



Use the dial to change the day.  
Then press the button under 'Ok' which moves you on the month.  
When you have finished, press the button under 'Ok' until 'Back' appears and then continue to press the button under 'back' to return to the start menu.



### Further help and advice

Wales & West Housing hope you will enjoy your new home and that these boilers will meet all your heating needs for many years to come. If you have any particular problems or would things you want to discuss or any problems with setting these up or anything else to do with your boiler then please call Wales and West Housing Customer Services on 0800 052 2526

### You also may like to know....

A video and digital version of this guide are available to view on our website under the name **Ffordd Yr Haearn**

Follow the link: [www.wwha.co.uk/en/how-to/](http://www.wwha.co.uk/en/how-to/)